



Titanium Hestia II Speakers

Product Specifications

Part of Alta Audio's Reference Series, the Titanium Hestia features formers (bobbins) constructed of titanium for smooth, extended dynamics, enhanced power handling and superior frequency response.

Titanium offers several benefits—its added stiffness allows for a larger voice, which in turn affords improved response across the sonic spectrum. Though more expensive than more common materials, the dramatic increase in performance and lifespan make it an essential ingredient in reference-grade loudspeakers.



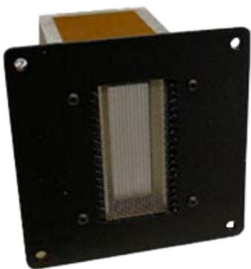
Shown with one grill removed

MSRP **\$37,500.00** (Piano Black)

Call for special pricing on Demo & Pre-Owned.

An Audiophile Perspective

The Hestia's drivers are in D'Appolito configuration, in which midrange drivers are placed above and below the tweeter—creating a unified wideband pulse response that most closely mimics the original sound pulse, i.e. as close a replica to the original sound as humanly possible. In the Hestia, we place two 7-inch midrange drivers below and one 6-inch midrange above the ribbon tweeter, in the crossover passband. The output of the two lower midranges matches the output of the single 6-inch midrange above the tweeter, thus creating a unified pulse. In the woofer crossover passband the two 7-inch lower midrange drivers produce the extended lower midrange and bass response needed to seamlessly blend with the XTL* Bass (patent pending) woofer.



Hestia Tweeter



The pinpoint accuracy of the monopole ribbon tweeter prevents the individual images from becoming diffuse or bloated, with the end result being a wide, palpable soundstage that is clear and realistic.

***Extended Transmission Line** — Alta Audio's proprietary technology that applies sonic geometry to tune speaker cabinets as if they are musical instruments, delivering an accurate, fast, and powerful low frequency response.



Titanium Hestia II Specifications

Sensitivity
90 dB / 2.83 Volts @ 1 Meter

Impedance
4 Ohms

Height
53.75"

Width
15' at bottom / narrowing to 8.5" AT top

Frequency Response
28Hz to 47kHz

Requirements
50 to 400 Watts (Bi-wired, or Bi-amped)

Depth
18" at bottom

Weight
135 lbs



For sales & service, contact Ultimate Audio AZ—your **Authorized Alta Audio Dealer**.

Call: 520.495.9091

Email: info@ultimateaudioaz.com

Website: www.ultimateaudioaz.com